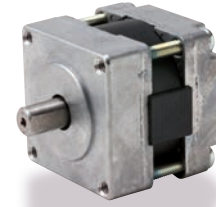
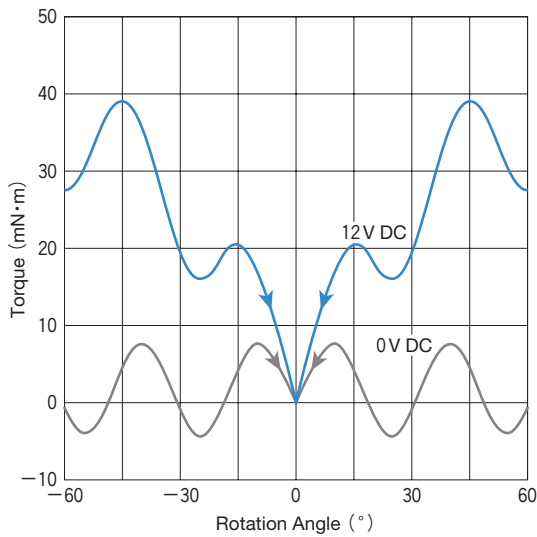


◆ Main Specifications

Operating Angle	1 step = 30° or 60°
Working Voltage	12 (V DC)
Non-Excited Holding Force	0.008 (N·m)
Torque when Excited (at 12W)	0.02 (N·m)
DC Resistance	12 (Ω)
Heat-Resistant Class	Class E (120 °C)
Coil Saturation Temperature Rise $\Delta\theta_s$ (at 20 °C)	$\Delta\theta_s \doteq 12 \times W$ (°C) $K \doteq 12$ (°C/watt)
Insulation Resistance	500V DC MEGA, 100MΩ or more
Dielectric Strength	1000V AC, 50/60Hz, 1 minute
Rotor Inertia	2.9 (g·cm ²)
Mass	80 (g)



◆ Torque Data



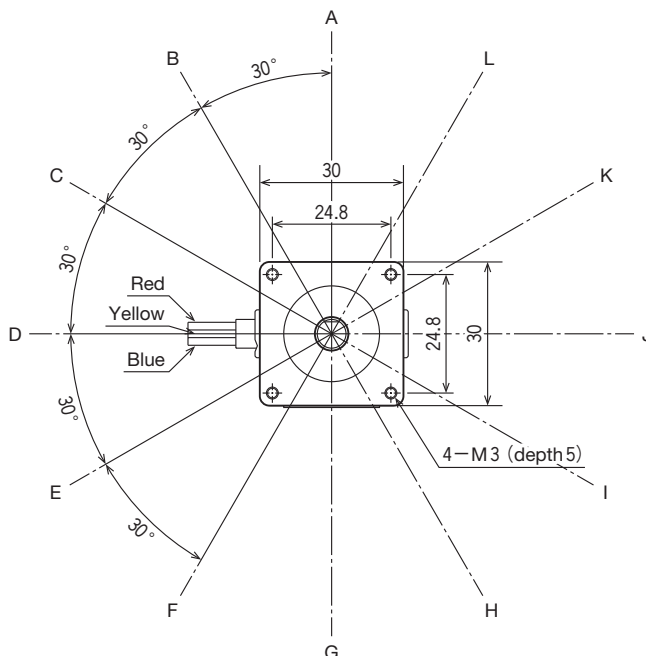
◆ Hard-Wiring Pattern Control Chart

30° Steps (0 = unplugged) 60° Steps (0 = unplugged)

Position	Lead Line Color	Red	Yellow	Blue
A		(+)	(-)	0
B		(+)	0	(-)
C		0	(+)	(-)
D		(-)	(+)	0
E		(-)	0	(+)
F		0	(-)	(+)
G		(+)	(-)	0
H		(+)	0	(-)
I		0	(+)	(-)
J		(-)	(+)	0
K		(-)	0	(+)
L		0	(-)	(+)

Position	Lead Line Color	Red	Yellow	Blue
A		(+)	(-)	0
C		0	(+)	(-)
E		(-)	0	(+)
G		(+)	(-)	0
I		0	(+)	(-)
K		(-)	0	(+)

◆ External Dimensions (mm)



Terminal Specifications

Lead Wire Length (mm) : 195
AWG Size : 26

