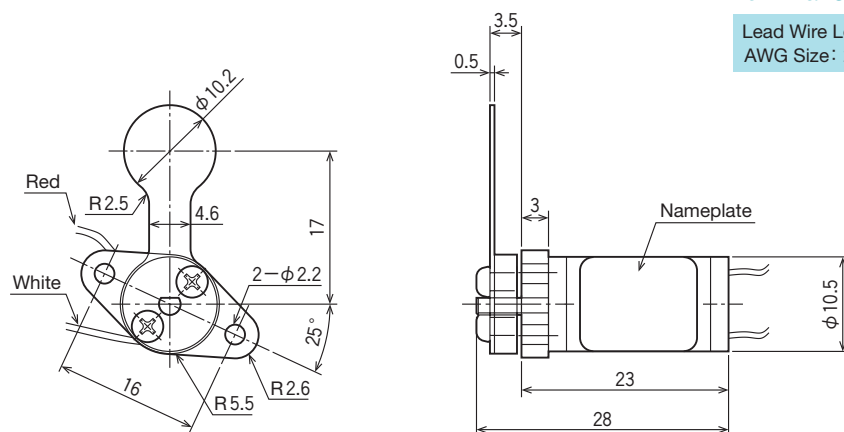


◆ Main Specifications

Heat-Resistant Class		Class E (120℃)
Rated Voltage		5 (V DC)
DC Resistance		13 (Ω)
Coil Saturation Temperature Rise Δθ _s (at 20℃)		Δθ _s ÷ 21.5 × W (℃) K ÷ 21.5 (℃/watt)
Temperature Rise Time Constant τ		0.5 (minutes)
Mass		11 (g)
Shutter Dimensions		ϕ10.2 (mm)
Operating Angle		50 (°)
Life Cycle/Durability		5,000,000 (cycles)
Response Speed	with Applied Voltage 3V DC	—
	with Applied Voltage 5V DC	13 (msec) or less
	with Applied Voltage 12V DC	8 (msec) or less



◆ External Dimensions (mm)



Terminal Specifications

Lead Wire Length (mm) : 320
AWG Size : 26

- In this diagram, the shutter is shown magnetically latched to the counterclockwise side.
- When a positive electrode is connected to the Red lead and a negative to the White, the shaft rotates clockwise; when a negative electrode is connected to the Red lead and a positive to the White, the shaft rotates counter-clockwise.

◆ How to Mount

